

RECTIFIER

PSR312

USER MANUAL




Notes to this manual

ATTENTION! Read this manual very carefully before installing and commissioning the specified module. This manual is a part of the delivered module. Familiarity with the contents of this manual is required for installing and operating the specified module. The rules for prevention of accidents for the specific country and the general safety rules in accordance with IEC 364 must be observed.

The function description in this manual corresponds to the date of publishing. Technical changes and changes in form and content can be made at any time by the manufacturer without notice. There are no obligations to update the manual continually.

The module is manufactured in accordance with applicable DIN and VDE standards such as VDE 0106 (part 100) and VDE 0100 (part 410). The CE marking on the module confirms compliance with EU standards 2006-95-EG (low voltage) and 2004-108-EG (electromagnetic compatibility) if the installation and operation instructions are followed.

Supplier:

	ELTEK DEUTSCHLAND GmbH BU Industrial Schillerstraße 16 D-32052 Herford
	+ 49 (0) 5221 1708-210
FAX	+ 49 (0) 5221 1708-222
Email	Info.industrial@eltek.com
Internet	http://www.eltek.com

Please note: No part of this document may be reproduced or transmitted in any form or by any means - electronic or mechanical, including photocopying and recording- for whatever reason without the explicit written permission of Eltek Deutschland GmbH.

Changes and errors excepted.

©2011. ELTEK DEUTSCHLAND GmbH. All rights reserved.

The current revision status of this user manual is the following:

Revision: 6.0

Date: 2010-11-23

Revision	Description of change	Writer	Date
00	First edition	RTH	2008-01-03
01	Minor text modifications, sections "Commissioning", "Output power diagram" and "Monitoring" reworked, index of figures inserted.	RTH	2008-05-15
1.2	Minor text modifications, new revision status numbering introduced.	RTH	2008-11-04
2.0	Section 4.2.1 "Start-up behaviour" inserted; Technical specifications: Adjustable output voltage range changed.	RTH	2009-04-29
3.0	Section 4.5 "Monitoring" reworked.	RTH	2009-05-15
4.0	Minor text modifications, section 4.7 "Default value setting for NiCd batteries" inserted.	RTH	2009-07-10
5.0	Technical specifications: "Internal decoupling circuit" corrected.	RTH	2009-07-24
6.0	Input frequency range updated.	RTH	2010-11-23

Contents

1A. Safety Instructions	5
1B. Electric Waste Disposal.....	5
2. General Information.....	6
3. Main Data/Equipment.....	6
3.1 Available Options and Assembly Equipment:	7
3.2 Front view/Front side LED panel	8
3.3 Rear Side Connection.....	9
3.4 Cooling and Air Flow Direction.....	10
3.5 Communication Interface	10
4. Handling.....	11
4.1 Storage	11
4.2 Commissioning	11
4.2.1 Start-up behaviour.....	11
4.3 Charge Characteristic/Output Power Diagram	12
4.4 LED Indications	13
4.5 Internal Monitoring	13
4.6 Threshold & Default Values.....	14
4.7 Default value setting for NiCd batteries	14
5. External Functions.....	15
6. Maintenance	15
7. Trouble Shooting.....	16
8. Technical Specifications	17
8.1 Dimensional Drawings:.....	19

Index of Figures

Figure 1) - DC Power Rack DCR PSR327-3.6 LV	7
Figure 2) - DC Power Rack DCR PSR327-4.8 LV	7
Figure 3) - Front view	8
Figure 4) - Male connectors.....	9
Figure 5) - Module air flow	10
Figure 6) - PSR312/24-50 Output Power Diagram	12
Figure 7) - Screenshot "PC software for CAN dongle"	14
Figure 8) - Module dimensions	19

1A. Safety Instructions



Warning!

Because several components of operating electrical modules are charged by dangerous voltage, the improper handling of electrical modules may be the cause of accidents involving electrocution, injury, or material damages.

- Operation and maintenance of electrical modules must be performed by qualified skilled personnel such as electricians in accordance with EN 50110-1 or IEC 60950.
 - Install the module only in areas with limited access to unskilled personnel.
 - Before starting work, the electrical module must be disconnected from mains. Make sure that the module is earthed.
 - Do not touch connector pins as they can be charged with dangerous voltage up to 30 seconds after disconnection.
 - Only spare parts approved by the manufacturer must be used.
-

1B. Electric Waste Disposal

Separate collection is the precondition to ensure specific treatment and recycling of waste electrical and electronic equipment and is necessary to achieve the chosen level of protection of human health and the environment.

In the case of waste disposal of your discarded equipment we recommend to contact a waste management company.

2. General Information

The PSR312 rectifier rectifies sinusoidal AC input voltage to DC output voltage.

The PSR312 is a hot plug-in module with rear side connectors and is designed to be mounted in an assembly set 19" sub rack (see section 3.1). Due to the state-of-the-art circuitry design, the unit has very low losses and therefore very compact dimensions, low weight and high power density.

The PSR312 rectifier can be used in all DC applications with or without battery.

The rectifier is delivered with factory set default values for **lead acid batteries**. If the rectifier is to be used for **NiCd batteries**, the default values must be parameterized accordingly using a CAN dongle and special software.

The nominal output power per unit is 1.2 kW. Up to a maximum of 48 modules can be switched in parallel to increase the system output power or to build redundant power supply systems (n + 1-principle).

3. Main Data/Equipment

Type Designation	Article Code	Nominal Output Voltage	Nominal Output Current
PSR312/24-50	101-012-148.00	24 V _{DC}	50 A _{DC}

Nominal input voltage: 230 V_{AC}
Nominal input current: 5.8 A_{AC}
Input frequency range: 16⅔ to 60 Hz (+5 %)
Nominal output power: 1.2 kW

For more specific data, see section 8 please.

3.1 Available Options and Assembly Equipment:

Designation	Article Codes
DC Power Rack DCR PSR327-3.6 LV (assembly set 19" sub rack 3U incl. backplane for three PSR312/24 V rectifiers and one UPC3-24 V DC controller), DCC-CB1 connection board included.	102-327-318.LV01
DC Power Rack DCR PSR327-4.8 LV (assembly set 19" sub rack 3U incl. backplane for four PSR312/24 V rectifiers).	102-327-408.LV01
Cover plate (with handle) to cover empty PSR slots, 1/4 x 19", 3U; RAL 7035	881-MEC-BPL.03.21.B
Monitoring, control and signalling unit (DC controller) UPC-24 V	301-003-498.02
DCC-CB1; connection board (with MSTB screw terminals) necessary to connect all measuring, control and signalling wires over the backplane of the sub rack to the control unit UPC3 (spare part)	302-DCC-CB1.00
CAN dongle, incl. software; necessary to change the internal default values of the rectifier (e.g. for NiCd application).	880-CAN-DNG.00



Figure 1) - DC Power Rack DCR PSR327-3.6 LV fully equipped with three PSR312 rectifiers and one UPC3 DC controller



Figure 2) - DC Power Rack DCR PSR327-4.8 LV fully equipped with four PSR312 rectifiers

3.2 Front view/Front side LED panel



Figure 3) - Front view

The PSR312 rectifier is equipped with the following four LED indicators:

INPUT OK
OUTPUT OK
Vout>
ALARM

For more information about the LED indicators, see section 4.4

Two captive screws are used for each module to secure it to the sub rack (components of the module)

3.3 Rear Side Connection

The rear side male connections (AC input voltage, DC output voltage and signals) are shown in figure 4) and are defined in the table below.

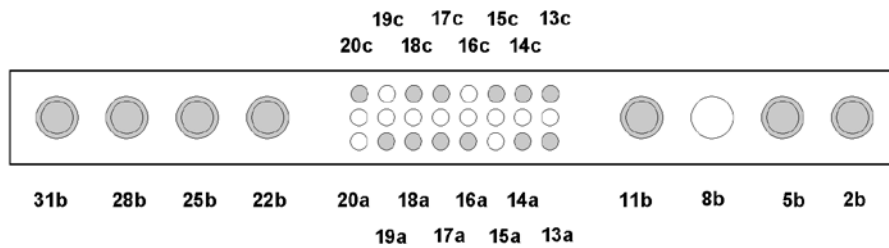


Figure 4) - Male connectors (shown from the rear side of the module)

Pin assignment of the rear side connector:

Pin	Function
2b	L1 - Input
5b	N - Input
8b	---
11b	PE
13a	CAN - CVSS
13c	(-) output voltage sense link
14a	CAN - H
14c	CAN - L
15a	---
15c	CAN - CVCC
16a	AGND
16c	---
17a	Hardwarecoding CODE2
17c	Hardwarecoding CODE1
18a	Collective Alarm NC
18c	Collective Alarm COM
19a	Collective Alarm NO
19c	---
20a	---
20c	(+) output voltage sense link
22b	(-) Output
25b	(-) Output
28b	(+) Output
31b	(+) Output

3.4 Cooling and Air Flow Direction

The unit is cooled with an internal fan. The airflow is from the front to rear side. The fan is monitored and speed-controlled dependent on module temperature. To provide sufficient air flow, a minimum space (see item “A” in figure 5) of 50 mm is required between the unit and the rear cabinet wall as well as an unobstructed supply of air to the front of the module.

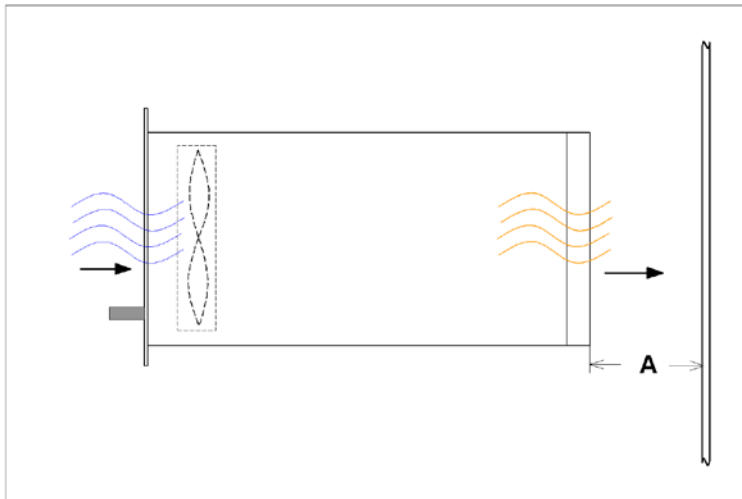


Figure 5) - Module air flow

3.5 Communication Interface

The PSR312 rectifier is equipped with a serial data interface in accordance with the Controller Area Network (CAN) specification. The CAN-Bus connection is integrated in the rear side connector.

Several modules in a system or parallel connection can be controlled and monitored through the CAN-Bus by a central UPC DC controller unit.

The following parameters of a specific rectifier unit can be controlled or monitored:

- Output voltage
- Output current
- Module temperature
- Module status

Furthermore, the rectifier unit receives all threshold values through the CAN-Bus from the DC controller unit.

4. Handling

4.1 Storage

Modules must be stored in a dry, dust free environment with a storage temperature in accordance with the specific technical data (see section 8).

4.2 Commissioning

Note: Before commissioning the module, make sure that the input voltage corresponds to the input voltage range of the unit as specified on the type plate and that the output voltage of paralleled units matches.

1. Carefully unpack the unit
2. Fill the rack beginning with the left slot.
3. Put the unit into an empty slot.
4. Carefully slide in the unit until the module connector touched the backplane connector.
5. Increase the force until the unit fits in completely. Avoid using too much force. If the unit does not fit in, begin again at step 3.
6. Secure the module using the two captive screws (M3x12) provided with the module.
7. Switch ON the module by external MCB.

Note: The PSR312 is serially equipped with an internal output side decoupling diode. This ensures hot plug-in capability for the module and enables the operator to **add** modules under operating conditions.

Note: Before the module is to be removed it must be **switched off** by the external input fuse!

Caution: After switching off the module the internal capacitors are still fully charged. Do not touch connector pins as they can still be charged with dangerous voltage after disconnection.

4.2.1 Start-up behaviour

When the PSR312 is switched on (without CAN-Bus connection) first it provides a start-up voltage according to the table below. The start-up voltage is held for 60 seconds, then the output voltage steps up to the internal default value.

PSR312	24 V version
Start-up voltage (V_{DC})	24.00
Default value V_o (V_{DC})	27.25

If a DC controller unit (UPC) is integrated into the system, it is powered with the start-up voltage after the rectifier has been switched on. The output voltage immediately steps up to the value given from the UPC unit via CAN-Bus.

If a DC controller unit (UPC) is integrated into the system (e.g. powered by the battery and due to this operating yet) the rectifier directly provides the output voltage given from the UPC unit via CAN-Bus.

4.3 Charge Characteristic/Output Power Diagram

The charge characteristic of the PSR312 is a power limited IV characteristic curve in accordance with DIN 41772/DIN 41773.

For modules in parallel operation mode a load sharing of about $\pm 10\%$ is attained due to a sloping output voltage line (-1% at 100% I_{nom}).

The module is continuous short circuit proof.

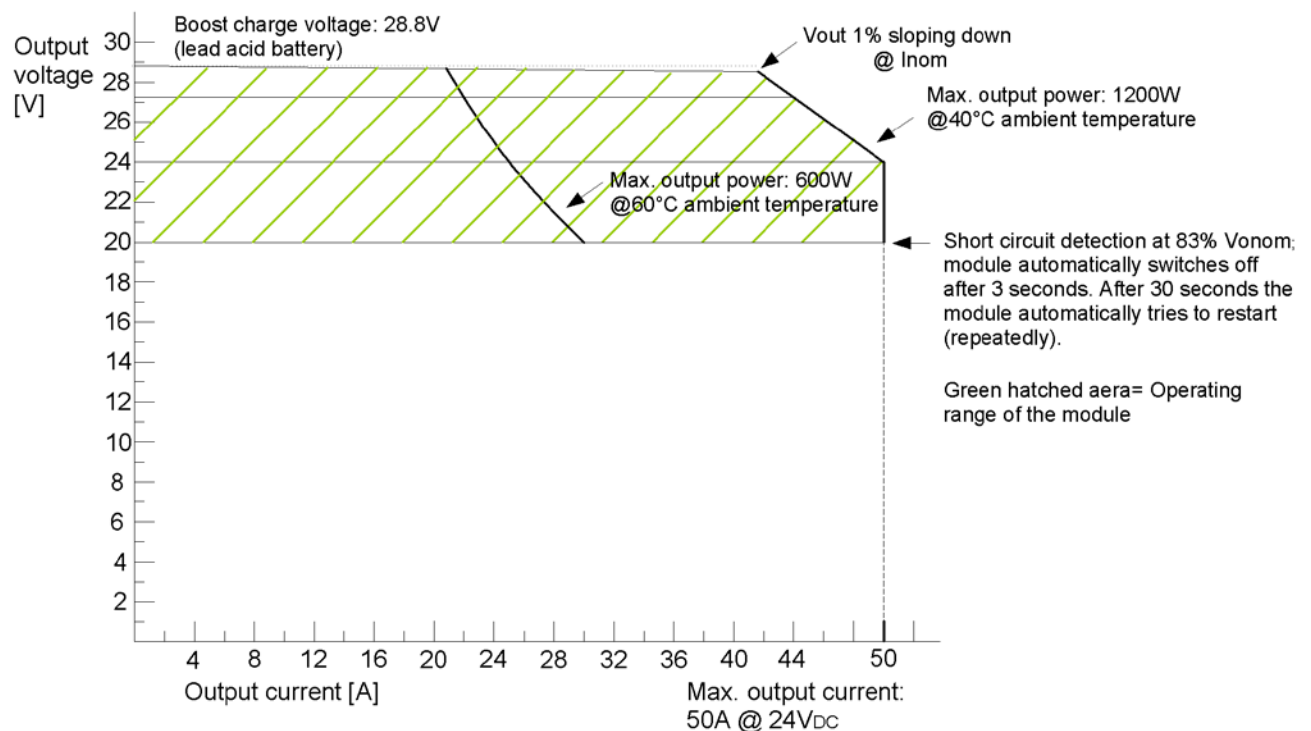


Figure 6) - PSR312/24-50 Output Power Diagram

Calculation of the output current (I_o) at different output voltage values:

The PSR312 rectifier provides an output power of $V_{nom} \times I_{nom} = P_{nom}$ (**24 V x 50 A = 1200 W**)

As shown with the output power diagram (see figure 6), the nominal output current (50 A) is available at nominal output voltage (24.0 V).

At other output voltage values (e.g. float and boost charge voltage as well), the output current is corresponding to the following formula: $I_o = P_{nom} : V_o$

Example 1):





Float charge voltage for lead acid batteries (12 cells) = 27.24 V; $I_o = 1200 \text{ W} : 27.24 \text{ V} = \underline{\underline{44 \text{ A}}}$

Example 2):

Boost charge voltage for lead acid batteries (12 cells) = 28.8 V; $I_o = 1200 \text{ W} : 28.8 \text{ V} = \underline{\underline{41.7 \text{ A}}}$

4.4 LED Indications

Functions of front panel LED indicators:

LED	Colour	Function
	green	INPUT OK - Mains input voltage ok (criteria: $195 V_{AC} \leq V_n \leq 265 V_{AC}$)
	green	OUTPUT OK - Vout ok (criteria: $V_{out} \geq 97\%$ of adjusted value)*
	red	$V_{out} >$ (criteria: $V_{out} \geq$ than adjusted operating threshold)*
	red	ALARM - Collective alarm**: Vin incorrect, Vout incorrect, module overtemperature, fan failure, short circuit

*For factory set output voltage threshold values, see section 4.6

**The module is equipped with an isolated signalling contact (normally open contact).
The maximum load is 60 V_{DC}/500 mA. The contact is time-delayed and reacts after approx. 10 sec.

4.5 Internal Monitoring

Monitored values	Criteria	Function
AC input voltage	I.) Mains input voltage $164 V \leq V_n \leq 195 V$	Linearly decreases output power.
	II.) Mains input voltage $< 164 V$	Module automatically switches off.
	III.) Mains input voltage $> 184 V$	Module switches on.
	IV.) Mains input voltage $> 275 V$	Module switches off (self-locking). It must be manually restarted.
DC output voltage	Output voltage higher than the adjusted operating threshold*	Module automatically switches off (self locking). The unit must be manually restarted.
Module temperature	Heat sink temperature $\geq 80^\circ C$	Module automatically switches off. It automatically switches on when the heat sink cools down to $\leq 70^\circ C$.
Cooling fan	Cooling fan malfunction	Module automatically switches off. After 30 sec. the module automatically tries three times to restart. If this fails, the module switches off and must be manually restarted.
Short circuit	Module automatically detects short circuit operation by the output voltage value. (criteria: $V_{out} \leq 83\%$ of V_{nom})	Module automatically switches off after 3 seconds. After 30 seconds the module automatically tries to restart repeatedly.

*For factory set output voltage threshold values, see section 4.6

4.6 Threshold & Default Values

The following table shows the factory set threshold/default values internally stored in the PSR312 unit (for **lead acid battery**):

Default values	24 V version
Output voltage V_o (V _{DC})	27.24
Over voltage $V >$ (V _{DC})	30.00
Current limiting I_{const} (A _{DC})	50.00

Note: The threshold/default values can only be changed in combination with an UPC DC controller unit.

If an UPC DC controller unit is controlling the power supply unit through the CAN-Bus, the charge voltage is completely controlled by the UPC based on its configuration values and momentary charge state (for example temperature compensation, boost charge, or battery test). That means that the values sent from the UPC over CAN-Bus have top priority. During CAN-Bus communication the internally stored values of the rectifier are invalid.

But when the CAN-Bus connection is inactive for more than five seconds (e. g. due to trouble), the PSR312 automatically switches back to the internally stored default values. In this case it is ensured that the battery is charged in the float charge mode.

4.7 Default value setting for NiCd batteries

If the rectifier is to be used to charge **NiCd batteries** the default/threshold values must be set according to the individual battery type using a CAN dongle and PC software (see section 3.2 “Available Options and Assembly Equipment”). A specific manual is available on request. For the adjusting range of the output voltage please see section 8 “Technical Specifications”.

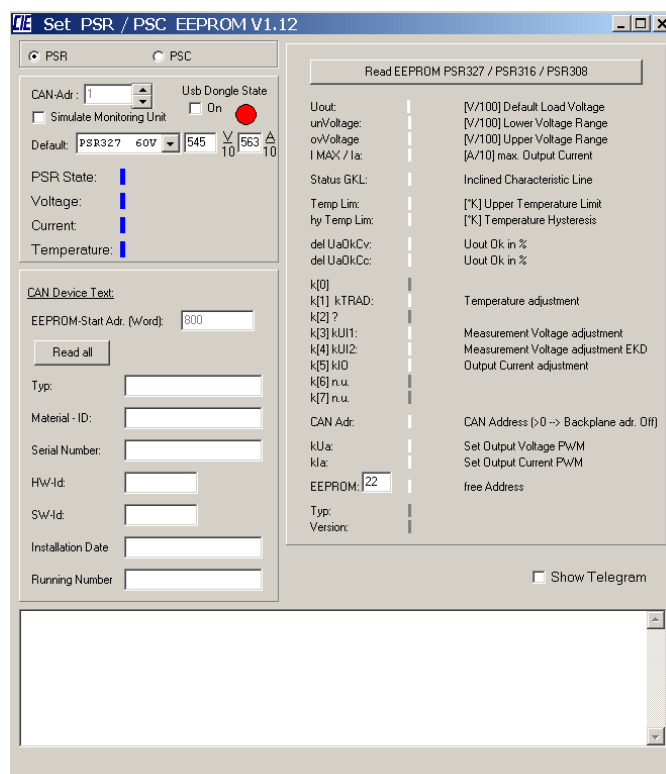


Figure 7) - Screenshot “PC software for CAN dongle”

5. External Functions

If the rectifier works together with an UPC DC controller unit, the following external functions can be used:

- Compensation of output voltage
- Temperature compensation of charge voltage
- Discharge test
- Boost charge mode

For more information about these functions, read the UPC user manual.

6. Maintenance

In general, the rectifier is maintenance-free. Exclusively the fan is a component consisting of moving parts. By way of precaution a yearly inspection with following checks is recommended:

- Mechanical/visual inspection
- Removal of dust and dirt, especially on radiator surfaces
- Check for internal dust or humidity

It is recommended to exchange the fan every five years.

Attention! Dust combined with moisture or water may influence or destroy the internal electronic circuits.

Dust inside the unit can be blown out with dry compressed air.

The interval between the checks depends on ambient conditions of the installed module.

7. Trouble Shooting

Symptom	Possible reason	Corrective action
No output voltage	Is mains voltage present?	Check →
	Mains switched to "ON" position?	Check
	PSR312 module plugged in securely?	Check
	Incorrect polarity or short circuit at the output?	Check
	LED V> on?	1.) Switch the module off and on. 2.) Check the settings for V> (see section 4.6).
Deviation of the output voltage	Is the unit operating in current limiting mode due to overload?	Reduce the load
	Is the output voltage setting Vout at the DC controller incorrect?	Adjust output voltage to nominal values (see section 4.6)
	If an external sensor lead is used for the output voltage, is the connection faultless?	Check

If the unit still does not work even though all checks have been done, contact your sales agent or the service department of ELTEK DEUTSCHLAND GmbH.

8. Technical Specifications

Type designation	PSR312/24-50
Article code	101-012-148.00
AC input:	
Nominal input voltage	230 V _{AC} ±20 %
Nominal input current	5.8 A _{AC}
Input frequency range	16⅔ - 60 Hz (+5 %)
Power factor	>0.99 @ P >50 %
Total harmonic distortion	<5 %
Efficiency	≥88 %
Internal input fuse	16 A (6.3 x 32 mm)
DC output:	
Nominal output voltage	24 V _{DC}
Nominal output current	50 A _{DC} @ 24 V
Nominal output power	1200 W
Charge characteristic line	IV characteristic according to DIN41772/DIN41773; power limited
Output voltage threshold V> (factory setting)	30 V _{DC}
Adjustable output voltage range	21 - 33 V _{DC}
Default value of the charging voltage (factory set, 2.27 V/cell; lead acid battery*)	27.24 V _{DC}
Output over voltage V _o > (factory set, 2.5 V/cell; lead acid battery*)	30 V _{DC}
Output under voltage V _o < (factory set, 1.7 V/cell; lead acid battery*)	20.4 V _{DC}
*Default/threshold values for charging of NiCd batteries are settable using a CAN dongle and PC software.	
Voltage ripple / psophometric acc. to CCITT-A	≤20 mV _{pp} / ≤ 1.2 mV
Dynamic accuracy of the charge voltage	<3 % V _{nom} at load changes between 10 % - 90 % - 10 % I _{nom} ; transient time ≤1.5 ms
Short circuit protection	continuous short circuit proof; 1x I _{nom}
Parallel operation	Yes (max. 48 units with DC controller unit UPC); current sharing ≤10 % I _{nom} ; sloping output voltage line (-1 % at 100 % I _{nom})

Internal active low-loss decoupling circuit	Yes, in the negative output line
---	----------------------------------

Internal output fuse	80 A
----------------------	------

Standard Features:

LED signalling	Input OK (green), Vo OK (green), Vo> (red), Alarm (red)
----------------	---

Main processor	16Bit Fujitsu
----------------	---------------

Isolated signalling contact	“Collective alarm”; relay COM/NO/NC, maximum contact load: 60 V _{DC} /500 mA
-----------------------------	---

Communications interface	CAN-Bus, proprietary protocol
--------------------------	-------------------------------

Environmental:

Ambient temperature	Operation: -20 °C to +55 °C, storage: -40 °C to +85 °C
---------------------	--

Climatic conditions	according to IEC 721-3-3 class 3K3/3Z1/3B1/3C2/3S2/3M2
---------------------	--

Max. installation altitude	≤1500 m
----------------------------	---------

Audible noise	<45 dB (A)
---------------	------------

Mechanical:

Type of construction	¼ x 19”, 3U
----------------------	-------------

Cooling	Fan cooling (temperature-controlled, r.p.m.-monitored)
---------	--

Connector	AC input, DC output and signals: DIN41612-M-connector
-----------	---

Dimensions (W/H/D)	106.3/133/326.5 mm
--------------------	--------------------

Minimum installation depth	438 mm (in combination with an assembly set 19” sub rack)
----------------------------	---

Weight	approx. 3.9 kg
--------	----------------

Type of enclosure / Protection class	IP20 (front panel)/1
--------------------------------------	----------------------

Colour	Front panel: RAL 7035, neutral, black print RAL 9005
--------	--

Compliances:

CE conformity	yes
---------------	-----

Compliance to safety standards	EN60950-1; VDE0100 T410; VDE0110; EN50178; EN60146
--------------------------------	--

Compliance to EMC standards	EN55022/24 (ITE), class “A”; EN61000-4 T2-5
-----------------------------	---

8.1 Dimensional Drawings:

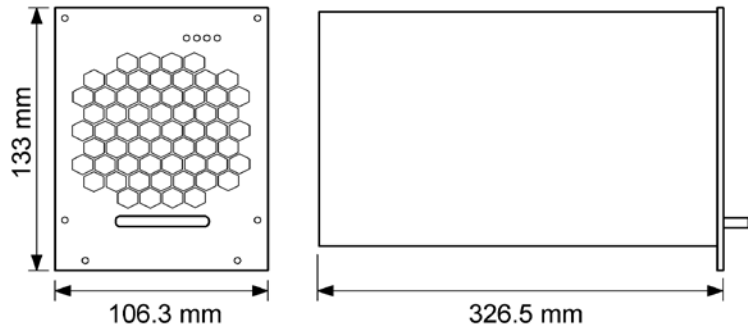


Figure 8) - Module dimensions



Supplier:



ELTEK DEUTSCHLAND GmbH
BU Industrial
Schillerstraße 16
D-32052 Herford



FAX	+ 49 (0) 5221 1708-210
Email	+ 49 (0) 5221 1708-222
Internet	Info.industrial@eltek.com
	http://www.eltek.com